

Stijlnummer	C026W	
Collectie	Suited	
Producttype	Tapijttegel	
Construction	Standard	Data + Performance
Type Fabricage	ISO 2424	tufted 1/10" 39.4 per 10cm
Uitzicht	ISO 2424	Multilevel-Patroonlus
Verfmethode	EN 994	100% In Oplossing Geverfd
Productformaat	EN 994	50 cm x 100 cm 6 tiles (3 m²) per box
Primaire Backing	ISO 2424	Pet Nonwoven
Secundaire Backing	ISO 2424	Comfortworx® Tegel Matrix Padlaag Bevat 90% Gerecycleerd Materiaal
Vezel	ISO 2424	Ecosolution Q® Polyamide 6
Totale Dikte	ISO 1765	11.7 mm
Afgewerkte Pooldikte	ISO 1766	2.4 mm
Totale Massa	ISO 8543	4588 g/m²
Getuft Gewicht	ISO 2424	949 g/m²
Effectieve Poolmassa	ISO 8543	287 g/m²
Pooldichtheid	ISO 8543	0.116 g/cm³

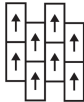


Gegevens

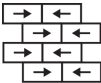
Steken	ISO 1763	142,000/m² 36.1 per 10cm
Beschermende Behandelingen		SSP® Shaw Grondbescherming
Elektrostatische Weerstand	ISO 6356	≤ 2.0 kv (Stroll Test)
Gebruik Classificatie	EN 1307	33 Commercial Heavy
Luxeklasse	EN 1307	LC1
Dimensionale Stabiliteit	EN 986	≤ 0.2%
Contactgeluidsisolatie	ISO 10140	36db*
Geluidsabsorptieclassificatie	ISO 354/11654	0.35 Aw Class D
Warmteweerstand m² K/w	ISO 8302	0.177 M² K/W Tog 1.77
Weerstand Tegen Droog Uitglijden	ISO 13893	Failed
Kleurvastheid Voor Licht	ISO 105-B02	>6
Ontvlambaarheid	EN 13501-1	Bfl-S1 (Adhered Testing)
Stoel Met Wieltjes	EN 985	≥2.4 Continuous USE

15 Jaar Commercieel Beperkt subject to installation in full accordance with manufacturer's instructions and a regular effective cleaning and maintenance programme.

Aanbevolen Installatiemethode



Ashlar



Brick



Monolithic



Basketweave



Half Basketweave



Boxed In



36dB

Corporate Headquarters +1 800 257 7429 | +1 706 532 7984 | Atlanta +1 404 853 7429 | Bengaluru +91 80 6773 0202 | Beijing +86 10 6568 588 | Chicago +1 312 467 1331 | Dubai +971 4 584 6956 | Hong Kong +852 2623 0371 | Latin America (Miami) +1 305 827 5912 | London +44 207 961 4120 | Los Angeles +1 800 233 1614 | Melbourne +61 3 9939 8543 | Mexico City +55 5010 7600 | Mumbai +91 22 6284 5050 | Nantong +86 400 800 7429 | New York +1 212 953 7429 | Paris +33 (0) 1 81 22 44 39 | San Francisco +1 415 955 1920 | Santiago +562 2431 5000 x 550 | São Paulo +55 11 3071 1702 | Shanghai +86 21 3338 4000 | Singapore +65 6733 1811 | Sydney +1 800 556 302

Coördinerende Producten

Carpet Tile: **Beam Comfortworx® Tile, Braid Comfortworx® Tile, Textile Comfortworx® Tile, Houndstooth Taskworx® Tile, Check Taskworx® Tile, Textile Taskworx® Tile, Jacquard Taskworx® Tile, Beam Taskworx® Tile, Braid Taskworx® Tile**

Kenmerken + Certificeringen

Environmental Product Declaration (EPD)

milieugarantie

ISO 9001

land van herkomst

BREEAM Contribution Credit

3de Partij Gecertificeerd in Overeenstemming Met ISO14044, ISO14025 & EN15804

Take Back Policy Offered For All Comfortworx Products

Gecertificeerd

Verenigd Koninkrijk

Certificate of Approval

Schools/Offices/Health/Industrial Shed

Retail

Well V2 Contribution Credit

X11 Long Term Emissions Control
Part 2: Flooring Optimization

M1> Emissions Class For Building Material

Groen Leed Bijdragekrediet

"MR-krediet: openbaarmaking en optimalisering van bouwproducten
Milieuproductverklaringen - Optie 1: Milieuproductverklaring (EPD)"

"MR-krediet: Openbaarmaking en optimalisering van bouwproducten
Materiaalingrediënten - Optie 1: Rapportage materiaalingrediënten"

3rd Party Certified in Accordance with ISO14044, ISO14025 & EN15804

HPD (Version 2.1)

Air Quality

Indoor Air Comfort Gold

M1

Certified

Certified

Memberships

WGBC Framework

UKGBC

Emirates Green Building Council

Chemsec

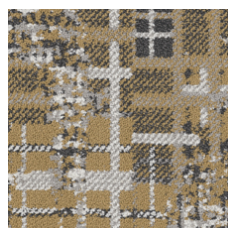
WGBC Framework

UKGBC

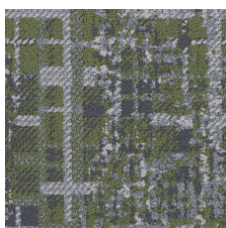
Emirates Green Building Council

Chemsec

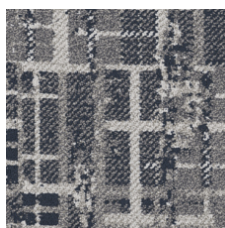
Available Colorways



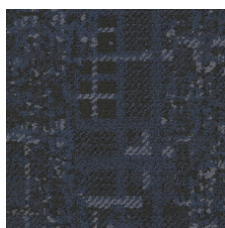
Saffron 79210



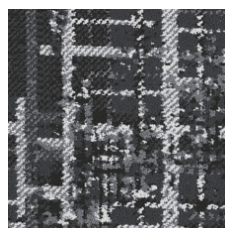
Bamboo 79375



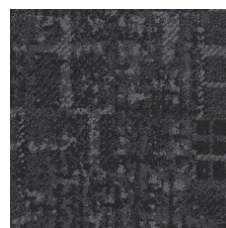
Denim 79485



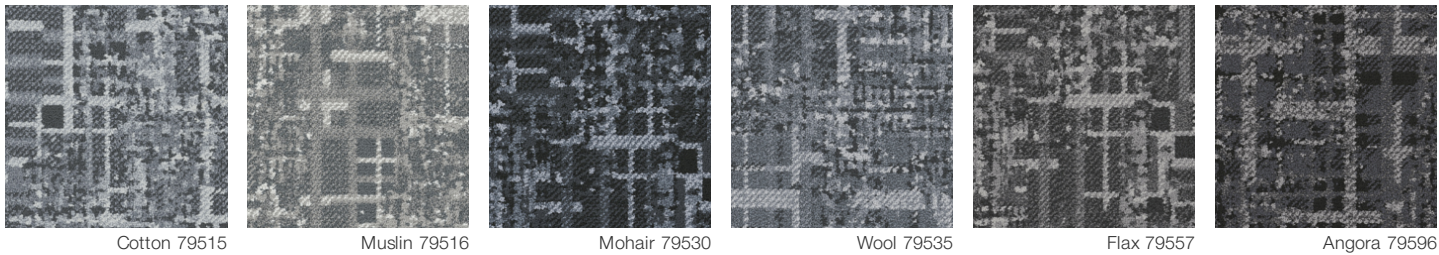
Indigo 79496



Merino 79500



Patent 79505



Aanvullende Informatie

**Manufactured in ISO 9001 certified facility. Meets or exceeds all local and national regulations in country of manufacture.

[Installation Guidelines](#)

15 jaar commercieel beperkt

Specifications are subject to nominal manufacturing variance. Material supply and/or manufacturing processes may necessitate changes without notice.

This product is an exclusive design and may not be duplicated in any manner. Use of this design in the creation of another product design is also strictly prohibited.

Visit shawcontract.com/testing for more information.

